

[Lower Key]

Psalm 84,
adapted by Harold Burgmayer

Lovely Is Your House

"Gabriel's Oboe"
by Ennio Morricone
arr. Harold Burgmayer

Slow, unhurried (♩ = 60) *mp*

1 Love-ly is your house — the dwell - ing — place of — the Most — High —
2 Love-ly is your house — for here — the — Lord — pro - vides the lost —

Slow, unhurried (♩ = 60)

mf *mp*

Detailed description: This system contains the first two lines of music. The vocal line is in treble clef with a key signature of one sharp (F#) and a 4/4 time signature. It begins with a whole rest, followed by a melodic line starting on G4. A triplet of eighth notes is marked with a '3'. The piano accompaniment is in bass clef, starting with a melodic line in the left hand and chords in the right hand. Dynamics include *mf* and *mp*. The tempo is 'Slow, unhurried' with a quarter note equal to 60 beats per minute.

4

— my soul — yearns e - ven faints — with long - ing for your courts. — My
— with springs of — li - ving — wa - ters and safe re - fuge — for

Detailed description: This system contains the third line of music. The vocal line continues from the previous system, with lyrics: 'my soul yearns even faints with long-ing for your courts. My with springs of living waters and safe refuge for'. The piano accompaniment continues with chords and a melodic line in the left hand.

7

heart and flesh cry out for you the liv - ing God Hap - py are — those — so near your
bet - ter is one day with - in your ho - ly courts than — a — thou - sand spent —

Detailed description: This system contains the fourth line of music. The vocal line continues with lyrics: 'heart and flesh cry out for you the living God Happy are those so near your better is one day with-in your holy courts than a thousand spent'. The piano accompaniment continues with chords and a melodic line in the left hand.

Lovely Is Your House - 2

10

al - tar Here they find their rest.
else - where. Hap - py

1

mf

Detailed description: This system contains the first two measures of the piece. The vocal line starts with a treble clef and a key signature of one sharp (F#). The lyrics are 'al - tar Here they find their rest. else - where. Hap - py'. The piano accompaniment is in the same key signature and features a melody in the right hand and a bass line in the left hand. A first ending bracket is shown above the vocal line, starting at measure 10 and ending with a repeat sign. The piano part includes a dynamic marking of *mf* (mezzo-forte) at measure 10.

14

those who dwell in your house, oh Lord

2

17

mf

mp

Detailed description: This system contains measures 14 through 17. The vocal line continues with the lyrics 'those who dwell in your house, oh Lord'. The piano accompaniment continues with a similar texture. A second ending bracket is shown above the vocal line, starting at measure 14 and ending at measure 17. The piano part includes dynamic markings of *mf* (mezzo-forte) and *mp* (mezzo-piano). The time signature changes to 3/4 at measure 17.

18

They live from strength to strength.

Rall.

f

Rall.

mp

Detailed description: This system contains measures 18 through 21. The vocal line continues with the lyrics 'They live from strength to strength.'. The piano accompaniment features a more complex texture with chords and moving lines. The piano part includes dynamic markings of *f* (forte) and *mp* (mezzo-piano), and a *Rall.* (Ritardando) marking. The time signature changes to 2/4 at measure 18 and back to 4/4 at measure 20. The system concludes with a double bar line and repeat signs.

[Original Key]

Psalm 84,
adapted by Harold Burgmayer

Lovely Is Your House

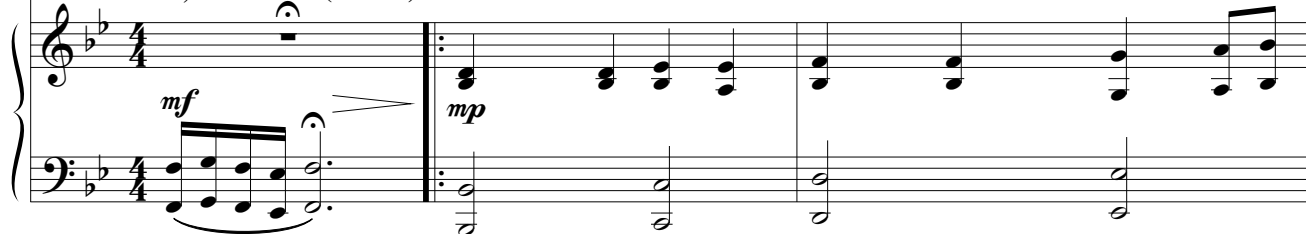
"Gabriel's Oboe"
by Ennio Morricone
arr. Harold Burgmayer

Slow, unhurried (♩ = 60) *mp*

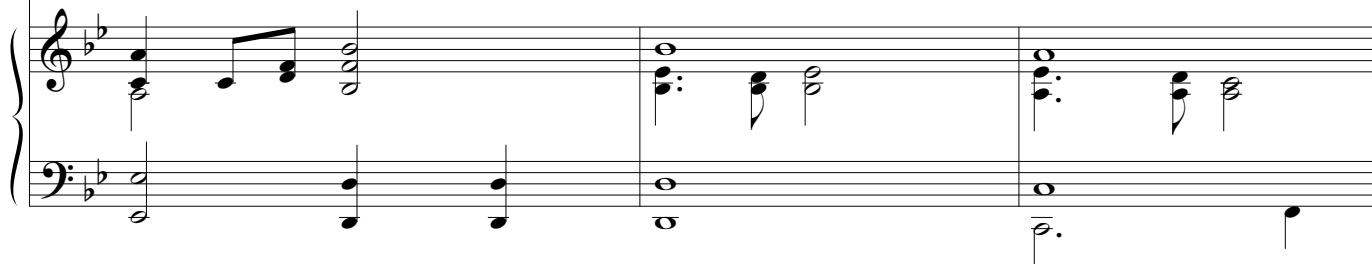


1 Love-ly is your house— the dwell - ing— place of— the Most— High—
2 Love-ly is your house— for here— the— Lord— pro - vides the lost—

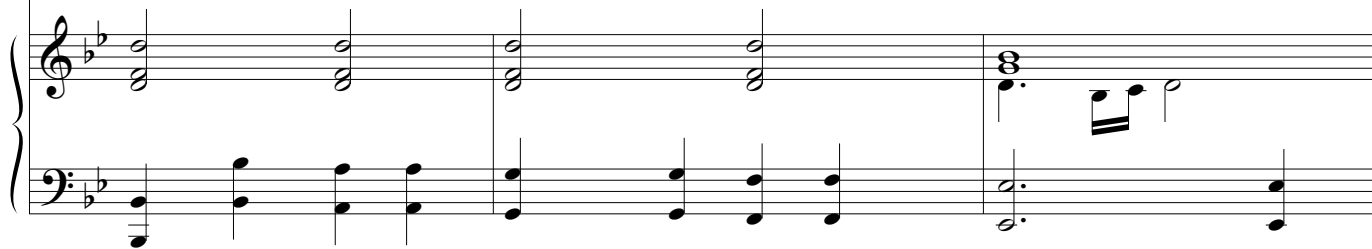
Slow, unhurried (♩ = 60)



— my soul— yearns e - ven faints— with long - ing for your courts.— My
— with springs of— li - ving— wa - ters and safe re - fuge— for



heart and flesh cry out for you the liv - ing God Hap - py are— those— so near your
bet - ter is one day with - in your ho - ly courts than— a— thou - sand spent—



Lovely Is Your House - 2

10

al - tar
else - where. Here they find their rest.

Hap - py

1

mf

14

those who dwell in your house, oh Lord

2

17

mf

mp

18

They live from strength to strength.

Rall.

f

Rall.

f

mp